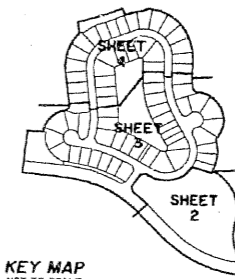


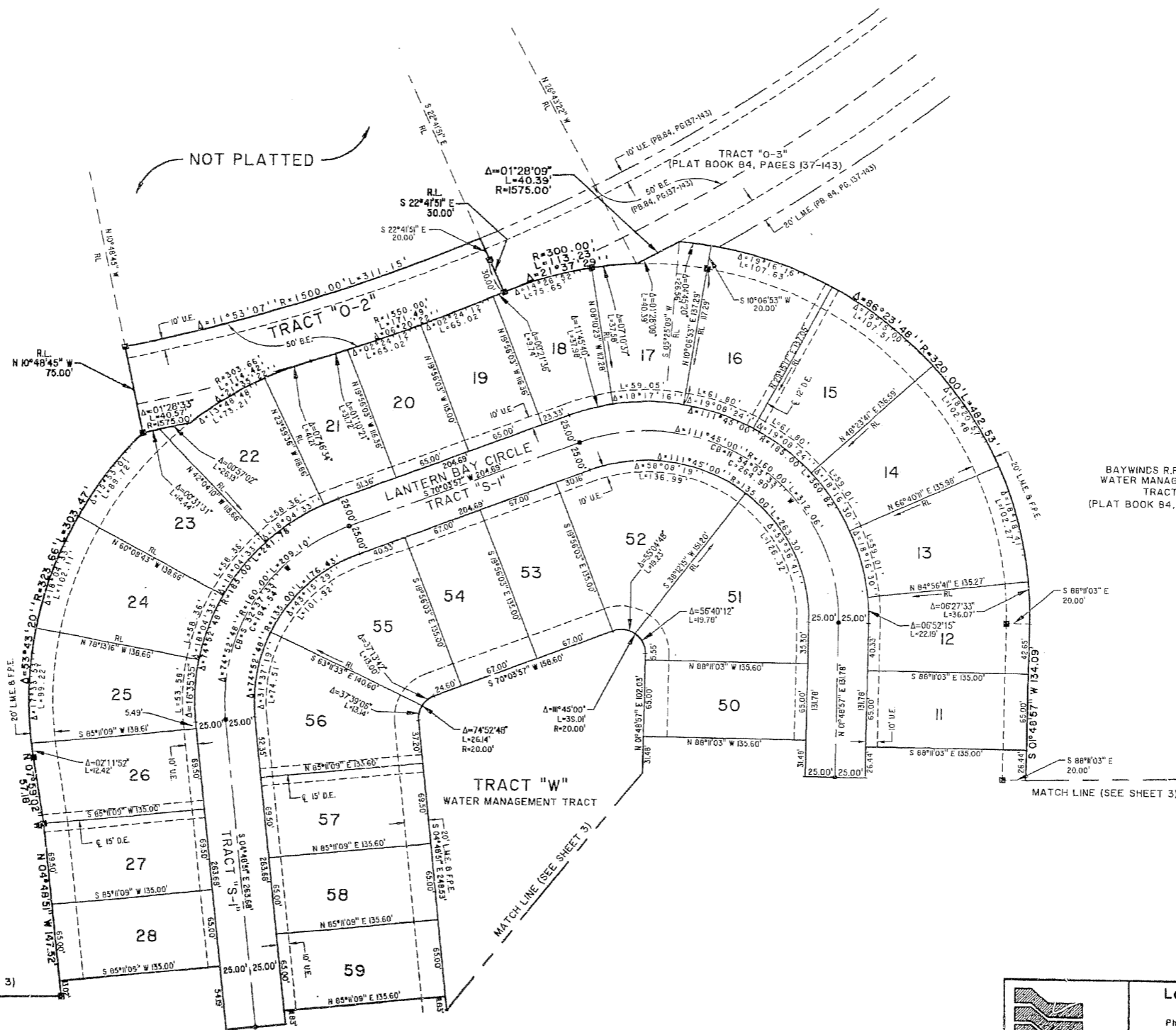
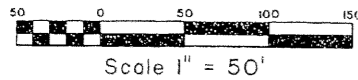
BAYWINDS R.P.D. PLAT NO. 2

BEING A PORTION OF SECTION 19, TOWNSHIP 43 SOUTH, RANGE 42 EAST AND THE REPLAT OF TRACT "L-2" BAYWINDS R.P.D. PLAT NO. 1 AS RECORDED IN PLAT BOOK 84, PAGES 137 THROUGH 143, PUBLIC RECORDS OF PALM BEACH COUNTY, FLORIDA, ALL LYING IN SECTION 19, TOWNSHIP 43 SOUTH, RANGE 42 EAST, CITY OF WEST PALM BEACH, PALM BEACH COUNTY, FLORIDA
SHEET 4 OF 4 JANUARY, 1999

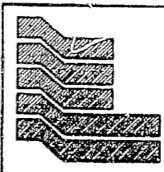
151



STATE OF FLORIDA
COUNTY OF PALM BEACH
THIS PLAT WAS FILED FOR RECORD AT _____
ON _____ DAY OF _____ 19____
AND DULY RECORDED IN PLAT BOOK NO. _____
ON PAGE _____
DOROTHY H. WALKER, CLERK OF THE CIRCUIT COURT
BY _____ D.C.



BAYWINDS R.P.D. PLAT NO. 1
WATER MANAGEMENT TRACT
TRACT "W-3"
(PLAT BOOK 84, PAGES 137-143)



Landmark Surveying & Mapping Inc.
1850 Forest Hill Boulevard
Ph. (561) 433-5405 Suite 100 W.P.B. Florida
LB# 4396

BAYWINDS R.P.D. PLAT NO. 2